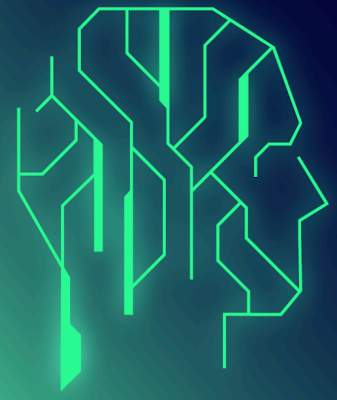


## Identity Exposure

# Tenable Identity Exposure Introduction On-Demand Training

Tenable University



## Tenable Identity Exposure Introduction Course

The Tenable Identity Exposure (TIE) Introduction Course consists of a series of short, on-demand videos providing the fundamental building blocks to install, connect and use TIE to secure Active Directory (AD) and disrupt attack paths. The Tenable Identity Exposure Introduction Course is available for no cost at Tenable University.

### Overview

This course is available as an On-Demand Training (ODT). Tenable presents basic features of Tenable Identity Exposure. Content includes installing, connecting and using the Tenable Identity Exposure platform. Content includes installation and connection to AD, using Indicators of Exposure (IOE), filtering and analyzing data to identify configuration changes and indicators of attack and setting up alerts and dashboards.

The course features a blend of lectures and demonstrations, all designed to promote active engagement and enhance learning outcomes.

### Audience

The Tenable Identity Exposure Introduction Course is suited for professionals interested in learning the basic operational use of Tenable Identity Exposure.

### Prerequisites

None.

## Key Benefits

### → Product-based Demonstrations

View practical, real-world demos showing Tenable products in realistic scenarios

### → On-Demand Scheduling

Short, easy to watch and self-paced videos available on your schedule at Tenable University

### → Strong Foundational Knowledge

Complete this course before progressing to the Virtual Instructor-Led Training (VILT) Tenable Identity Exposure Specialist Course.

## Registration

Contact [sales@tenable.com](mailto:sales@tenable.com) for registration information or purchase at [tenable.com/buy/training](https://tenable.com/buy/training).

#### ABOUT TENABLE

Tenable is the exposure management company, exposing and closing the cybersecurity gaps that erode business value, reputation and trust. The company's AI-powered exposure management platform radically unifies security visibility, insight and action across the attack surface, equipping modern organizations to protect against attacks from IT infrastructure to cloud environments to critical infrastructure and everywhere in between. By protecting enterprises from security exposure, Tenable reduces business risk for more than 44,000 customers around the globe. Learn more at [tenable.com](https://tenable.com).

COPYRIGHT 2024 TENABLE, INC. ALL RIGHTS RESERVED. TENABLE, NESSUS, LUMIN, ASSURE, AND THE TENABLE LOGO ARE REGISTERED TRADEMARKS OF TENABLE, INC. OR ITS AFFILIATES. ALL OTHER PRODUCTS OR SERVICES ARE TRADEMARKS OF THEIR RESPECTIVE OWNERS.

110524