

Tenable One

Tenable One Platform Enablement

Professional Services

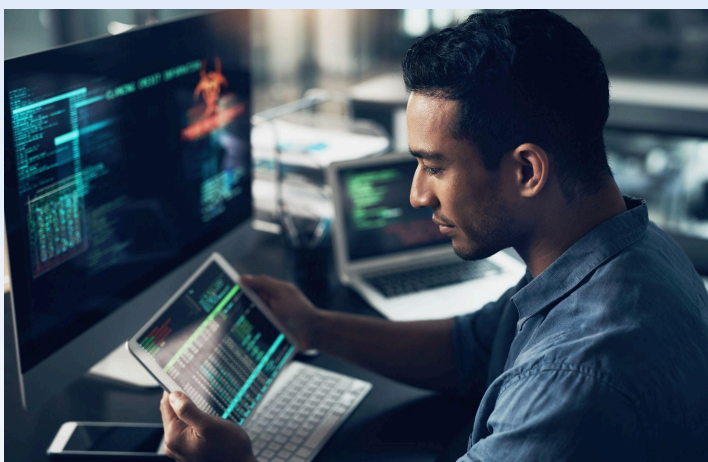


Tenable One Platform Enablement Services

A service engagement with Tenable Professional Services helps optimize your solution implementation so you can gain visibility, provide context and communicate cyber risk at all levels of your organization.

The Tenable One Platform Enablement service empowers you with the knowledge and skills to use Tenable One to gain visibility across the modern attack surface, and accurately communicate cyber risk for optimal business performance.

Our experienced consultants will provide enablement sessions to guide you through all the components of your platform. Consultants will focus on the Exposure Management components of Tenable One, including Lumin Exposure View, Attack Path Analysis, and Inventory capabilities to show you how you can translate technical asset, vulnerability and threat data into clear business insights and actionable intelligence.



Key Benefits

→ Mature your Exposure Management program

Begin with a Platform Enablement session with product experts to guide your journey.

→ Receive comprehensive documentation of your Tenable One solution

Deliverable includes asset details, tagging, Service Level Agreements (SLAs), Lumin Exposure View information, Attack Path Analysis and Inventory details.

→ Align operations with industry best practices

Our consultants verify your business practices against known best practices and document their guidance for peak program operations.

ABOUT TENABLE

Tenable is the exposure management company, exposing and closing the cybersecurity gaps that erode business value, reputation and trust. The company's AI-powered exposure management platform radically unifies security visibility, insight and action across the attack surface, equipping modern organizations to protect against attacks from IT infrastructure to cloud environments to critical infrastructure and everywhere in between. By protecting enterprises from security exposure, Tenable reduces business risk for approximately 44,000 customers around the globe. Learn more at tenable.com.

COPYRIGHT 2025 TENABLE, INC. ALL RIGHTS RESERVED. TENABLE, NESSUS, LUMIN, ASSURE, AND THE TENABLE LOGO ARE REGISTERED TRADEMARKS OF TENABLE, INC. OR ITS AFFILIATES. ALL OTHER PRODUCTS OR SERVICES ARE TRADEMARKS OF THEIR RESPECTIVE OWNERS.

042325